

Year 9 Options 2026



Saltash
Community
School

Achieving More Together

Tenacity - Empathy - Aspiration - Motivation

Broad Horizons - Confident Leaders



Contents

4. [Introduction](#)
5. [Options Process Key Dates](#)
6. [Progression Routes](#)
7. [Pathways](#)
8. [Optional Subjects - 3D Art \(GCSE\)](#)
9. [Optional Subjects - Art & Design \(GCSE\)](#)
10. [Optional Subjects - Computer Science \(GCSE\)](#)
11. [Optional Subjects - Creative iMedia \(CamNat\)](#)
12. [Optional Subjects - Design Technology \(GCSE\)](#)
13. [Optional Subjects - Drama \(GCSE\)](#)
14. [Optional Subjects - Enterprise & Marketing \(CamNat\)](#)
15. [Optional Subjects - French \(GCSE\)](#)
16. [Optional Subjects - Geography \(GCSE\)](#)
17. [Optional Subjects - German \(GCSE\)](#)
18. [Optional Subjects - Health & Social Care \(CamNat\)](#)
19. [Optional Subjects - History \(GCSE\)](#)
20. [Optional Subjects - Hospitality & Catering \(Vocational\)](#)
21. [Optional Subjects - Media Studies \(GCSE\)](#)
22. [Optional Subjects - Music \(Tech Award\)](#)
23. [Optional Subjects - Photography \(GCSE\)](#)
24. [Optional Subjects - Psychology \(GCSE\)](#)
25. [Optional Subjects - Religious Studies \(GCSE\)](#)
26. [Optional Subjects - Separate Science \(Biology, Chemistry, Physics\)](#)
27. [Optional Subjects - Sociology \(GCSE\)](#)
28. [Optional Subjects - Sports Studies \(CamNat\)](#)
29. [Optional Subjects - Travel & Tourism \(BTEC\)](#)
30. [Compulsory Subjects - English Language \(GCSE\)](#)
31. [Compulsory Subjects - English Literature \(GCSE\)](#)
32. [Compulsory Subjects - Mathematics \(GCSE\)](#)
33. [Compulsory Subjects - Combined Science \(GCSE\)](#)
34. [Compulsory Subjects - Religion & Ethics \(Non-Examined\)](#)
35. [Compulsory Subjects - Personal Development \(Non-Examined\)](#)
36. [Compulsory Subjects - Games \(Non-Examined\)](#)

Introduction

Dear Parents and Carers,

Year 9 is a crucial, but exciting, time in your child's education. What they choose to study now will set them on their road to further education and their future career. It can be daunting at first, but we are with you every step of the way to help you and your child to make good decisions about which subjects to study over the next two years. This booklet contains key information about the range of courses on offer.

The National Curriculum requires students to study a broad range of compulsory subjects. These are English, Mathematics, Science, Personal Development (Careers, Citizenship, Health, Personal and Social Education), Physical Education and Religious Education. This is our Core Curriculum, and lead to 5 GCSE qualifications: English Language, English Literature, Mathematics and Combined Science (a double GCSE award). Further information about the Core Curriculum can be found later on in this booklet.

At Saltash Community School, students choose a further 4 courses to study alongside the Core Curriculum. Students must choose one subject from each of the following option blocks.

Option Block 1: Humanities	Option Block 2: Digital, media, culture, sport	Option Block 3: Creative	Option Block 4: Personal
History Geography	Computer Science Media Studies French German History Geography Sports Studies	3D Art Art and Design Drama Music DT	3D Art Art & Design Computer Science Creative iMedia DT Drama Enterprise & Marketing French Geography German H&S Care History Hospitality & Catering Media Studies Music Photography Psychology RS Separate Science Sociology Sports Studies Travel & Tourism

We offer a wide range of subjects, but it is not always possible to run a course which too few students choose. Some combinations of subjects may prove impossible to timetable and we reserve the right to move students between option blocks to balance numbers.

We do appreciate that making these decisions can be difficult. If you need any help or have any concerns, please contact your child's tutor in the first instance. You can also seek advice from Mrs Gue (PD & Careers), Ms Speare (SEND) or subject teachers at Options Evening and Parents' Evening. We hope that this booklet proves informative and helpful as you make these important choices.

TEAM Saltash

Options Process Key Dates

- **Tuesday 6th - Thursday 8th January 2026** - assemblies in reading time, outlining the process and the subjects on offer.
- **Monday 12th January** - Options booklet and presentations shared with Year 9 students, parents and carers.
- **Thursday 22nd January - Options Evening & Careers Fair**, 6-8pm – Please attend this informative evening to hear about the options process in full detail. There will be a presentation from the Headteacher, as well as subject stalls where you will be able to speak with subject teachers and gain some valuable advice and guidance from staff.
- **Thursday 5th February** - Parents' Evening. Details will follow.
- **Friday 6th February** - the Options form will go live. This is an online form, and you will only be able to complete it once.
- **Friday 27th February, 9am** - final deadline for submitting Options forms.



Progression Routes

Academic Qualification	Vocational Qualification
GCSE Grades 1 - 3	Level 1
GCSE Grades 4 - 9	Level 2
A level A* - E	Level 3

We offer a broad and balanced curriculum that prepares students for a wide range of post-16 courses. The basic rule of thumb is that students will progress from one level to the next.

We expect most students to achieve level 2, and all to achieve level 1. Good level 1 qualifications help support those who want to study a vocational pathway post 16, providing access to college and other level 2 courses. Good level 2 qualifications lead to A levels or other level 3 courses.

We strongly advise that students choose a wide range of subjects to study, keeping as many future pathways open as possible for Sixth Form, colleges, universities and employers. The English Baccalaureate shows that pupils have gained a broad academic education. To achieve this, students need to achieve a GCSE grade 4+ in the following 5 subjects: French **or** German, Geography **or** History, English, Mathematics and Science (including Computer Science).

A BTEC or Technical Award at Level 1/2 course offers students the chance to study in a different way to more familiar GCSEs. Course content is often more “hands on” in nature and features unit tasks that need to be completed practically and then written up with advice and guidance from the teacher. Please do not fall into the trap of thinking that these are less valuable qualifications.

Every qualification we offer is looked upon highly by Further and Higher Education institutions and all allow excellent career prospects. Success now, and in the future, is far more guaranteed if you play to your strengths and 10 good grades at GCSE is far more valuable than 10 mediocre ones- so think carefully before dismissing any options.

GCSE exams will be linear (examined at the end of Year 11) and there may be a limited coursework element. To allow pupils the time to study in depth, students spend more time on qualification-based courses at Key Stage Four. The current allocation is as follows, although this may be subject to change:

Compulsory Subjects (ppf = periods per fortnight)					
English 8ppf	Maths 8ppf	Science 10ppf	RE 1ppf	PD 1ppf	Games 2ppf
Optional Subjects are timetabled for 5 periods per fortnight					

Please note that all subjects require a minimum number of students to run, so whilst we endeavour to give all students their first choices, this is not always possible.

Pathways

This year, to aid you in making the correct choices, each subject page contains a coloured arrow, which relates to a career pathway. If you have a specific career in mind, you should check to see if the subjects you are taking are recommended for further progression on this pathway.

The pathways, and some example careers in each field, are:

Healthcare

Healthcare (nursing, midwifery, social care, counsellor, paramedic, veterinary nurse)

Medical

Medical (doctor, dentist, pharmacist, physio, vet)

Creative

Creative (artist, actor, illustrator, photographer, fashion/graphic designer, playwright, theatre director)

Education

Education (teacher, lecturer, teaching assistant, nursery manager, educational psychologist)

Business

Business & Entrepreneurship (advertising, business owner, accountant, sales manager, marketer, administration, HR)

STEM

STEM (Engineer, lab scientist, pilot, architect, accountant, actuary)

Law

Law (solicitor, barrister, arbitrator, coroner, legal clerk, paralegal, court usher)

Digital & Media

Digital & Media (broadcaster, producer, social media manager, researcher, journalist, marketer)

Sports

Sports Coaching & Development (professional sportsperson, physio, coach, referee, PE teacher, sports commentator, leisure centre manager)

Hospitality

Hospitality & Tourism (hotel manager, cabin crew, chef, travel agent, tour guide, events manager)



Optional Subjects

3D Art (GCSE)

Creative

Business

STEM

Digital & Media

Hospitality

GCSE 3D Design OCR - Contact: Mr Romain - jromain@saltashcloud.net

The OCR GCSE in 3D Design provides students with the opportunity to explore the exciting world of three-dimensional design through creative, hands-on projects. This dynamic course focuses on developing students' skills in design thinking, problem-solving, and the use of a wide range of materials and techniques to create functional and aesthetically pleasing objects.



Key Features:

- **Creative Exploration:** Students will engage in designing products that address real-world needs, experimenting with different mediums, including wood, metal, plastics, and digital technologies.
- **Practical Skills Development:** The course fosters technical expertise, including model making, prototype development, and the use of CAD (Computer-Aided Design) software.
- **Design Process:** From initial research and sketching to the final evaluation of prototypes, students will learn the stages of the design process and how to refine ideas through iterative testing and feedback.
- **Personal Expression:** Emphasis is placed on encouraging individual creativity while developing a personal design style. Projects may include product design, architecture, and conceptual work.
- **Sustainable Design:** Students will explore how to design with sustainability in mind, using eco-friendly materials and considering the environmental impact of their work.

Assessment:

- **Controlled Assessment (60%):** This is an internally assessed portfolio of design work where students demonstrate their ability to research, design, make, and evaluate a 3D design project.
- **Examination (40%):** The final exam assesses students' ability to apply their knowledge of design principles to a design challenge, including technical and practical skills.

Why Study 3D Design?

This course is ideal for students interested in product design, architecture, or engineering. It equips learners with practical skills that are highly transferable to a wide range of careers in design, manufacturing, and technology. Whether you dream of designing furniture, cars, or cutting-edge technology, this qualification gives you a solid foundation to pursue further study or enter the creative industries.

Progression Opportunities:

Upon successful completion of the GCSE, students can progress to **A-level Design and Technology**, pursue vocational qualifications, or begin apprenticeships in design, engineering, or manufacturing. The creative and problem-solving skills gained in this course are also highly valued in fields such as graphic design, product development, and even marketing.

Optional Subjects

Art & Design (GCSE)

GCSE Art and Design OCR - Contact: Mr Romain - jromain@saltashcloud.net

Art and Design at GCSE isn't just for those students who want to become an artist or work within the creative sector. When you take Art and Design you embark on a journey that allows you to take risks, built on prior knowledge from KS3.

Art and Design makes you stronger in emotional intelligence, it improves your communication skills and gives you discipline and confidence when facing creative criticism. Each part of your Art education will help you to transition to the next part of your life and have you ready for your prospective career within the field.

Even other subjects linked to Art but not necessarily as creative can benefit from a GCSE level Art and Design qualification. You can't just study Art and expect to get top marks because you can draw or paint, it's very much a personal subject. You must be prepared to analyse what you see and to experiment with various styles and media.

Creative

Education

Business

Digital & Media

Hospitality

Component	Marks	Duration	Weighting
Portfolio (01)	120	1 Year	60% Non-exam assessment
Externally set task (02)	80	10 hours	40%

Component 01: Portfolio

Students produce a portfolio of practical work showing their personal response to a set starting point, brief, scenario or stimulus. The portfolio may be presented in appropriate formats for the specification title they are following and chosen area of study, including sketchbooks, digital presentations, mounted sheets, maquettes, prototypes, animated work, scale models or illustrated written work.

Component 02: Externally set task

Students respond to one of five themes, each with a range of written and visual starting points and stimuli. Students research, plan and develop ideas for their response to the option they have chosen, which they must then realise within the ten-hour supervised time period.



Optional Subjects*

Computer Science (GCSE)

Creative

GCSE Computer Science OCR J277 - Contact: Mrs Broad - rbroad@saltashcloud.net

Education

Why choose to study Computer Science?

GCSE Computer Science provides pupils with an opportunity to study and investigate the modern/changing world of computer science. Like all sciences, Computer Science is a combination of theory and practical elements where learners can apply the knowledge and skills learned in the classroom to real-world problems.

Business

Law

This qualification helps to develop deeper computational thinking skills, enabling learners to design and use problem solving systems, whilst also studying the theoretical principals underpinning the subject.

Digital & Media

GCSE Computer Science can also be chosen as one of your English Baccalaureate subjects, which are highly desired by colleges and further educations.

Module	Content	Assessment	% of final mark
J277/01	Component 01: Computer systems <ul style="list-style-type: none">• System Architecture• System Storage, Memory & Data• Network• Security• Ethical, Legal & Moral Issues with IT	Exam 1 hour 30 minutes	50%
J277/02	Component 02: Computational thinking, algorithms and programming <ul style="list-style-type: none">• Algorithms• Programming Techniques• Robust Programs• Computational Logic	Exam 1 hours 30 minutes	50%

What Might GCSE Computer Science Lead To?

The course will provide excellent progression to 'A' level Computer Science, vocational courses and on to degree level courses in the areas of Computing, Engineering and Science. The course provides the knowledge, skills and understanding that a growing number of employers are demanding.

Where might Computer Science take me?

Post-16 courses:

- A-level Computer Science
- BTEC Computing, BTEC ICT
- T-level Digital production, design and development

Post-18 courses:

- Computer Science
- Information Systems
- Software Engineering
- Artificial Intelligence
- Health Informatics

Optional Subjects

Creative iMedia (CamNat)

OCR Creative iMedia Level 2 (J834) - Contact: Mrs Broad - rbroad@saltashcloud.net

Why choose to study Creative iMedia?

Creative i-Media provides candidates with a high quality, flexible, industry-relevant qualification. The hands-on approach has strong relevance to the way young people use technology required in creative media. The qualification will encourage independence, creativity and an awareness of the digital media sector.

Creative

Education

Business

Law

Digital & Media

Module	Content	Assessment
R094:	<p>Visual identity and digital graphics</p> <p>In this unit you will learn to how to develop visual identities for clients and use the concepts of graphic design to create original digital graphics to engage target audiences.</p> <p>Topics include:</p> <ul style="list-style-type: none">• Develop visual identity• Plan digital graphics for products• Create visual identity and digital graphics	Non-exam Assessment (25%)
R097:	<p>Interactive Digital Media</p> <p>In this unit you will learn to how to develop a product such as an app, website, or powerpoint for clients and use editing skills for audio, video and images to create an original product to engage target audiences.</p> <p>Skills include:</p> <ul style="list-style-type: none">• Planning/Designing each element• Content creation• Testing and Evaluating the product	Non-exam Assessment (35%)

Optional Subjects

Design and Technology (GCSE)

Creative

GCSE Product Design AQA - Contact: Mr Romain - jromain@saltashcloud.net

Business

GCSE Design and Technology will prepare students to participate confidently and successfully in an increasingly technological world. Students will gain awareness and learn from wider influences on Design and Technology including historical, social, cultural, environmental and economic factors.

STEM

Digital & Media

Students will get the opportunity to work creatively when designing, making and apply technical and practical expertise. Our GCSE allows students to study core technical, designing and making principles, including a broad range of design processes, materials, techniques and equipment. They will also have the opportunity to study specialist technical principles in greater depth.

Hospitality

Paper 1 worth 50% = Exam	NEA worth 50% = Coursework
<p>Technical Principles;</p> <ul style="list-style-type: none"> • New and Emerging Technologies • Energy • Electronic systems • Materials and their Properties • Forces • Sustainability • Scales of Production • 15% GCSE Mathematics content <p>Designing and Making Principles;</p> <ul style="list-style-type: none"> • <i>Investigation</i> • <i>The Work of Others</i> • <i>Design Strategies</i> • <i>Design Communication</i> • <i>Material Management</i> • <i>Specialist Tools and Equipment</i> • <i>Analysis and Evaluation</i> 	<p>A substantial design and make task demonstrating the whole design process, with a focus on iterative design.</p> <p>A client based, personal project to make a functioning, innovative prototype and accompanying electronic portfolio of evidence.</p> <p><u>30 Guided Learning Hours</u></p>

Further Education and Careers

Aerospace Engineer, Arboricultural Officer, Animator, Carpenter, Computer Aided Design Technician, Costume Designer, Electrician, Royal Navy Engineer to name but a few.

We are preparing our students for career pathways that potentially do not even exist yet in a technologically advancing world. Post 16 we have had a significant number of successful apprenticeship applicants in the field of engineering, construction and mechanics. The GCSE gives our students the foundation of knowledge and skills to access the Design and Technology A Level. Post 18 our students have gone on to develop careers in Lego New York, Theatre Design, Architecture, Printed Textiles, Media and Medical Prosthetic Engineering.



Optional Subjects

Drama (GCSE)

GCSE Drama AQA (601/8575/2) - Contact: Miss Jones - kejones@saltashcloud.net

There is so much more to studying Drama than acting. If you love working with other people, forming an opinion, working with creativity, having your voice heard, having fun and performing on a stage; then Drama is the subject for you. Drama is a subject full of developing the knowledge and skills that may lead on to a career in the industry such as an actor, director, stage manager, set designer or musical theatre performer. Studying Drama can also help you to develop many transferrable skills that link to any career: working as a team, problem-solving, sticking to deadlines, voicing your opinion, developing your confidence and speaking in front of others.

Creativity, collaboration and critical thinking are essential skills required for you to lead happy and successful adult lives and these are central to the Drama curriculum; as well as having lots of fun and creating work that can educate, inform or entertain your audience. We live in a world where thinking of new ideas and solutions is essential, and studying Drama enables you to develop your creativity which could be important for a job that doesn't even exist yet!

Creative

Education

Digital & Media

Sports

Hospitality

Course Overview:	
Component 1:	This component enables learners to gain an understanding of the roles and responsibilities in the world of theatre as well as practical and theoretical knowledge of how Drama is developed and performed. This is assessed in a written exam during year 11.
Component 2:	This component enables learners to gain, develop and demonstrate knowledge and understanding of the skills and techniques needed to create and refine original work in the performing arts. You will work in a group to create your own play with your own message. You will also complete a 'log' for this work. This component is assessed by your teacher.
Component 3:	This component is purely practical. You will work on your own or in a group to bring text to life. An examiner will visit to watch your work and you will perform two extracts from your chosen script. This is a chance to show off your acting skills and apply all of your learning to this exciting task.

This course will equip you with the skills to go on to work in the Performing Arts industry as an actor, as well as the teamwork, confidence, problem-solving and reflective skills to lead a happy and successful adult life in any career.



Optional Subjects

Enterprise & Marketing (CamNat)

Creative

Education

Business

Law

Digital & Media

Hospitality

BTEC Cambridge National Enterprise and Marketing L1/L2 (J837) -
Contact: Ms Shepherd- cshepherd@saltashcloud.net

This L1/L2 qualification is equivalent to one GCSE. It will be graded Pass/Merit/Distinction at L1 and Pass/Merit/Distinction/Distinction* at L2.

Why choose to study Enterprise and Marketing?

This is a different approach to Business really, focusing on the startup and initial stages of the product launch. After looking at the basics of marketing, design and finance (Exam) you will develop a product idea (NEA) and prepare a 'pitch' with a promotional campaign to be presented to an audience (NEA).

Unit	Title	Reference	Assessment	Weighting
R067	Enterprise and marketing concepts In this initial unit you will learn about the key factors to consider and activities that need to happen to operate a successful small start-up business.	R/618/5877	External Exam	40%
R068	Design a business proposal In this unit you will learn how to develop market research tools and use these to complete your market research. You will use your research findings to decide who your customers will be, create a design mix and produce your product design ideas.	Y/618/5878	NEA Portfolio	30%
R069	Market and pitch a business proposal In this unit you will learn how to design a brand which will make your product stand out in the market, before creating a promotional campaign to get your brand noticed by customers. Your promotional campaign will include you choosing different methods of promotion which you think are most suitable for your target customers. You will then need to create a presentation that you will pitch to an audience.	D/618/5879	NEA Portfolio	30%

What can I do with this qualification?

Use this qualification to join the L3 version of this course; if your result is strong enough you might consider taking the A level in Business. You could take an apprenticeship and then go on to start your own business in the future.

Optional Subjects*

French (GCSE)

GCSE French Edexcel - Contact: Miss Schön - sschon@saltashcloud.net

Should I continue studying French?

The answer to this has to be "yes!" French ranks 3rd of the most spoken languages in Europe and 6th of the most spoken languages in the world. When you think about there being more than 7000 languages in the world, this is remarkable.

Additionally, French was the second most sought-after language on the UK labour market in 2022. There are hundreds of vacancies in the UK every year that cannot be filled, because candidates need to speak a foreign language. With a language in your GCSE suite you will undoubtedly stand out from the crowd. Linguists are rare, and it simply isn't true that "everyone speaks English anyway!" <https://phys.org/news/2023-01-students-lacking-language-skills-jobs.html>

Speaking a language fluently opens up options for you that you might not have thought of yet: travelling or even working and living abroad for a time and gain in-depth knowledge about a different culture. How exciting is this!

Are you not convinced yet? Learning a language also enhances your creativity and develops new areas in your brain which improve your memory, your ability to focus and your decision-making. https://www.fluentu.com/blog/advantages-of-learning-a-foreign-language/#toc_10

What topics will I study?

The main themes of the course are: **My personal world / Lifestyle and wellbeing / My neighbourhood / Media and technology / Studying and my future / Travel and Tourism.**

In all the themes there are quite a few sub-topics such as places in town, shopping, TV and film, music, sports, the natural world and many more.

What will the final exams be like?

You will have the option of doing a Foundation Tier or a Higher Tier exam depending on your progress during the 2 years. With both options you will attend 4 exams at the end of Y11 that are all worth 25% of your final grade:

Listening, Speaking, Reading and Writing.

In the **speaking** exam, which you will do with your familiar language teacher, you will read a text aloud, do a role play and describe a photo with a follow up general conversation. The maximum time is 9 minutes for Foundation Tier and 12 minutes for Higher Tier and you get to prepare your photo card and role-play before the exam.

The **writing exam** is as follows:

- Foundation: 4 sentences to describe a photo, translation into French, then two writing tasks (40-50 words and 80-90 words).
- Higher: translation into French and two writing tasks (90 words and 130-150 words).

The **reading and listening** exams are very similar for both tiers but contain more vocabulary when you choose Higher Tier.

Education

Business

Law

Digital & Media

Sports

Hospitality

Optional Subjects*

Geography (GCSE)

Education

GCSE Geography AQA - Contact: Ms Ryall – hryall@saltashcloud.net

Business

This exciting and relevant course studies geography in a balanced framework of physical and human themes and investigates the link between them.

STEM

Students will travel the world from their classroom, exploring case studies in the United Kingdom, higher income countries, newly emerging economies and lower income countries. Topics of study include climate change, poverty, deprivation, global shifts in economic power and the challenge of sustainable resource use. Students are also encouraged to understand their role in society, by considering different viewpoints, values and attitudes. All students will also be given the experience of applying their knowledge outside the classroom. We conduct 2 day trips (Dawlish Warren and

Digital & Media

Hospitality

Millbay), in which students gather fieldwork data to answer their own geographical enquiry question.

Module	Content	Assessment	% of final mark
Paper 1: Living with the physical environment	<ul style="list-style-type: none"> The challenge of natural hazards The living world Physical landscapes in the UK 	Written exam: 1 hour 30 minutes	35%
Paper 2: Challenges in the human environment	<ul style="list-style-type: none"> Urban issues and challenges The changing economic world The challenge of resource management 	Written exam: 1 hour 30 minutes	35%
Paper 3: Geographical applications	<p>Fieldwork</p> <p>Students need to undertake two geographical enquiries (human and physical), each of which must include the use of primary data, collected as part of a fieldwork exercise. These are day trips and are compulsory as they are essential as students are examined on their fieldwork in the written exam.</p> <p>Issue evaluation</p> <p>Pre-release resource booklet made available 12 weeks before Paper 3 exam – it will focus on an issue such as deforestation, urban planning etc and students will be examined on these issues in the written exam.</p>	Written exam: 1 hour 30 minutes	30%

Where might geography take me?

Geography is great for any kind of career that involves the environment, planning, or collecting and interpreting data. Popular careers for people with geography qualifications include: town or transport planning, surveying, conservation, sustainability, waste and water management, environmental planning, tourism, teaching, travel blogging and weather forecasting.

Geography will help you develop your communication and teamwork skills. You'll also develop your research and analysis skills including in IT and fieldwork, which means you will be able to collect and look for patterns in data.

Employers love the mix of technical and social skills people get from studying geography, which they see as very transferable, i.e. useful for a whole range of jobs.

Optional Subjects*

German (GCSE)

GCSE German Edexcel - Contact: Miss Schön - sschon@saltashcloud.net

Should I continue studying German?

The answer to this has to be “yes!” German ranks 2nd of the most spoken languages in Europe and 14th of the most spoken languages in the world. When you consider that there are than 7000 languages in the world, this is remarkable.

Additionally, German was the most sought-after language on the UK labour market in 2022. There are hundreds of vacancies in the UK every year that cannot be filled, because candidates need to speak a foreign language. With a language in your GCSE suite you will undoubtedly stand out from the crowd. Linguists are rare, and it simply isn't true that “everyone speaks English anyway!”

<https://phys.org/news/2023-01-students-lacking-language-skills-jobs.html>

Speaking a language fluently also opens up options that you may not yet have considered: travelling, or even working and living abroad, is so much easier and more enjoyable with a 2nd language. Add to this the fact that you will gain an in-depth knowledge about a different culture, which helps you to connect more easily with others, and you have an option that really will set you up well for later life. You never know where your future will take you, but what's certain is that more doors open with a 2nd language.

Still not convinced?

Learning a language also enhances your creativity and develops new areas in your brain which improve your memory, your ability to focus and your decision-making. This makes it incredibly useful in supporting all other areas of your learning. https://www.fluentu.com/blog/advantages-of-learning-a-foreign-language/#toc_10

What topics will I study?

The main themes of the course are: **My personal world / Lifestyle and wellbeing / My neighbourhood / Media and technology / Studying and my future / Travel and Tourism.**

In all the themes there are quite a few sub-topics such as places in town, shopping, TV and film, music, sports, the natural world and many more.

What will the final exams be like?

You will have the option of doing a Foundation Tier or a Higher Tier exam depending on your progress during the 2 years. With both options you will attend 4 exams at the end of Y11 that are all worth 25% of your final grade:

Listening, Speaking, Reading and Writing.

In the **speaking** exam, which you will do with your familiar language teacher, you will read a text aloud, do a role play and describe a photo with a follow up general conversation. The maximum time is 9 minutes for Foundation Tier and 12 minutes for Higher Tier and you get to prepare your photo card and role-play before the exam.

The **writing exam** is as follows:

- Foundation: 4 sentences to describe a photo, translation into German, then two writing tasks (40-50 words and 80-90 words).
- Higher: translation into German and two writing tasks (90 words and 130-150 words).

The **reading and listening** exams are very similar for both tiers but contain more vocabulary when you choose Higher Tier.

Education

Business

Law

Digital & Media

Sports

Hospitality

Optional Subjects

Health & Social Care (CamNat)

Healthcare

HEALTH AND SOCIAL CARE Cambridge National Certificate (Level 1/2) OCR -
Contact: Ms Edwards - eedwards@saltashcloud.net

Medical

An interest in people and a respect for what makes them unique is really important, but being a team player, and cooperating and encouraging others are also desirable attributes.

Education

STEM

The Cambridge Certificate in Health and Social Care comprises of two mandatory core units and two optional units and is equivalent to one GCSE. Students who study this course will develop the skills and attributes essential for successful performance in all aspects of their working life, not just the Health and Social Care sector. The course allows students to progress to Level 3 Health and Social Care or directly into the workplace as an apprentice. This course can subsequently be continued at a higher level as professional development within the Health and Social Care sector.

Sports

Hospitality

With nearly 4 million people working in this sector and more places emerging annually, the unique feature of this sector is the broad range of occupations available. They vary from professional and technical occupations, clerical, secretarial, management and administration, sales and personal services to occupations in the forces. Individuals with health and social care qualifications can progress into further studies to enter into social work, nursing, or as occupational therapists, dieticians, physiotherapists, paramedics, health and social care managers/care coordinators, and many more. There are A level pathways, college entries, university places and apprenticeship places... a path for everyone.

Mandatory Assessments	Detail	% of final mark
Unit 21 - Exam assessment (1hr)	RO21 Essential values of care for use with individuals in care settings Underpinning key knowledge and skills of the core care values and how to demonstrate them in professional practice; the rights of individuals who access health and social care services; some basic legislation to be aware of; and how individuals that use services are protected.	25%
Unit 22 - Coursework assessment	RO22 Communicating and working with individuals in health, social care and early years settings Developing communication to work effectively with individuals in these setting is also a key aspect to underpin knowledge and skills of communication methods and factors affecting communication and the impact of personal qualities that contribute to the delivery of effective care, such as patience, empathy and respect. This enables students to then undertake a range of internally assessed practical activities.	25%

We also choose two optional units, each worth 25% of the final mark, from a range which enable students to undertake a variety of internally assessed practical activities.

- Using basic first aid procedures
- Understanding body systems and disorders
- Creative activities
- Understanding life stages

Optional Subjects

History (GCSE)

GCSE History Edexcel - Contact: Mrs Anderson - kanderson@saltashcloud.net

- History can give you the skills most employers want - whatever the job you have in mind.
- History provides you with a range of key skills such as communication, analysis, investigation and interpretation.
- The study of History will help you to understand the world in which we live today.

Education

Business

Law

Digital & Media

Hospitality

Module	Content	Assessment	% of final mark
Paper 1: British Thematic Study with Historical Environment	Medicine in Britain, 1250 to the present day WITH Surgery and treatment on the Western Front 1914 – 1918 Addresses the issue of change and continuity in medicine from 1250 with a special focus on surgery during World War One. What ideas did people in the past have about the cause of ill health, and what cures did they use? What factors brought about progress, and what was the rate of change? What impact did medical change have on the rest of society?	Exam 1 hr 15 mins Part A is source based and Part B extended written answers	30%
Paper 2: British depth and period study	Early Elizabethan England, 1558 – 88 AND Superpower relations and the Cold War, 1941 – 1991 The British depth study focuses on the position of Elizabeth I as Queen and the challenges that she faced. These were from within England and from foreign powers. The role of religion and the changes in Elizabethan society will be included. The period of study focuses on the origins, developments and the ending of the Cold War. Students will examine the role of the two Superpowers and key individuals for each part of the course.	Exam 1hr 45 mins and broken into two parts. Both are written short and extended answers.	40%
Paper 3: Modern Depth Study	Weimar and Nazi Germany, 1918 – 39 Examines Weimar Germany and its problems, the reasons for its collapse and the development of the Nazi State. Examines how the Nazis were able to keep control of Germany through the use of terror and propaganda.	Exam 1hr 30 mins Source based questions.	30%

Where might History take me?

- History is a good qualification and especially if you are interested in journalism, the law, science, tourism, accountancy, hospitality, marketing, TV research work and a number of other careers.
- It is a good link for university and courses such as Law, Politics and Business.
- It provides a good basis for apprenticeship courses such as Paralegal, Journalism and Solicitor. It is also recognised by many companies offering apprenticeships such as Jaguar and Land Rover.

Optional Subjects

Hospitality & Catering (Voc)

Healthcare

Hospitality and Catering - Level 1/2 Vocational Award Eduqas -
 Contact: Miss Noble - rnoble@saltashcloud.net

Education

This Level 1/2 Vocational Award is equivalent to one GCSE qualification.

Business

This exciting course offers a unique opportunity for students who want to develop their knowledge and understanding of food and practical food preparation skills.

Sports

Pupils will develop an array of culinary techniques, as well as knowledge of food traditions and kitchen safety.

Hospitality

Students will gain an understanding of the Hospitality and Catering industry – hospitality and catering is Britain's fourth-largest industry and accounts for about 10% of the total workforce. The course is aimed at students who are interested in any aspect of food and cookery in the context of the hospitality and catering sector. Working in hospitality and catering requires a passion for food, an interest in and understanding of how it impacts on the body and a wide range of practical skills.

Module	Content	Assessment
Unit 1: The Hospitality and Catering Industry	The applied purpose of the unit is for learners to use their knowledge and understanding of the hospitality and catering industry in order to propose new hospitality and catering provision to meet specific needs. <ul style="list-style-type: none"> • LO1 - Different types of Hospitality and Catering providers and their environment • LO2 - How 'provisions operate' within Hospitality and Catering • LO3 - 'Health and Safety' requirements in the Hospitality and Catering Industry • LO4 - How food causes ill health • LO5 - Propose a hospitality and catering provision to meet specific requirements 	Online, Externally Assessed Exam 90 minutes 40% of Final Grade
Unit 2: Hospitality and Catering in Action	The applied purpose of the unit is for learners to safely plan, prepare, cook and present nutritional dishes. In this unit you will gain knowledge of the nutritional needs of a range of client groups in order for you to plan nutritional dishes to go on a menu. You will learn and develop safe and hygienic food preparation, cooking and finishing skills required to produce nutritional dishes.	Internally Assessed portfolio of work 60% of Final Grade

Taking it further/Careers in Hospitality & Catering

The award gives students a foundation from which to progress to further education such as WJEC Level 3 Applied Certificate/Diploma in Food Science and Nutrition, Level 2/Level 3 Diplomas in Hospitality and Catering, Level 2/Level 3 Diplomas in Professional Cooking, Level 3 Diploma in Hospitality and Tourism Management etc. and can lead to a career as a restaurateur/chef, in catering management, as a food technologist, a nutritionist or a dietician.

Optional Subjects

Media Studies (GCSE)

GCSE Media Studies - Contact: Mr Turner - mturner@saltashcloud.net

Why choose to study Media Studies?

- Media is an engaging and creative subject, which blends written analysis and production, providing you with an opportunity to make your own media texts (using industry-standard software).
- Studying media will help you understand the world in which we live today. Through the analysis of music videos, websites, video games, films, newspapers, magazines and TV, we “decode” the dominant stories of our time, providing insight into a range of important social and political issues – including racial and gender inequality.
- Media Studies helps develop a number of key skills - analytical writing, critical thinking and the creative use of ICT to communicate effectively.

Creative

Education

Business

Digital & Media

Hospitality

Module	Content	Assessment	% of final mark
Component 1: Exploring Media Language and Representation	In this exam, you will analyse a wide range of media texts, including newspapers, magazine covers, film posters, adverts and video games – some of which you will have studied in class.	Exam 1 hr 30 mins	40%
Component 2: Understanding Media Forms and Products	In this exam, you will analyse a small number of media texts in detail, including TV crime dramas and music videos studied in class.	Exam 1 hr 30 mins	30%
Component 3: Creating Media Products	This is a practical unit, completed in class, where you will have the opportunity to create your own media texts (e.g. film posters/DVD covers or websites).	Non Examined Assessment (completed in lessons)	30%

Where might Media Studies take me?

- Media Studies is a good qualification if you are interested in journalism, web (or graphic) design, writing, editing, marketing, television, film or video game production.
- It is a good link for university and apprenticeship courses in Film/Media Studies, Graphic Design, Journalism and Marketing.
- It provides skills which will help in nearly any job, where you use images and sound to communicate. The use of creative media is growing exponentially within a wide range of industries and Media Studies equips you with the skills to express yourself effectively within a variety of mediums.

Optional Subjects

Music (Tech Award)

Creative

BTEC Tech Award Music Practice (603/7055/5) - Contact: Miss Jones - kejones@saltashcloud.net

Education

Studying Music helps to stimulate the brain, brings communities together, develops technical accuracy and improves your mental health, confidence and resilience. We are proud to have a wide range of instruments and equipment in our department as well as Peripatetic teachers offering lessons in: piano, violin, acoustic/bass/electric guitar and drums and often our BTEC students take up these additional lessons.

Digital & Media

Hospitality

Creativity, collaboration and critical thinking are essential skills required for you to lead happy and successful adult lives and these are central to the Music curriculum; as well as creating work that can support you to express yourself and entertain your audience. We live in a world where thinking of new ideas and solutions is essential, and studying Music enables you to develop your creativity which could be important for a job that doesn't even exist yet.

Course Overview:	
Component 1:	This component enables learners to gain an understanding of key genres and techniques used within the Music industry. You will explore key genres and then apply this knowledge practically to your musical responses to the brief/theme set by the exam board. This component is assessed by your teacher.
Component 2:	This component enables learners to gain, develop and demonstrate knowledge and understanding of the skills and techniques needed to create and refine original work in Music. You will work in a group or on your own to create your own musical responses to the brief that is set by the exam board. This component is assessed by your teacher.
Component 3:	This component requires you to respond to a Music brief. You will work on your own or in a group to respond to the brief set by the exam board in controlled conditions. This is a chance to apply all of your learning to this task whilst exploring styles and creating original Music. This component is externally assessed.

This course will equip you with the skills to go on to work in the Performing Arts industry as a musician, as well as the teamwork, confidence, problem-solving and reflective skills to lead a happy and successful adult life in any career



Optional Subjects

Photography (GCSE)

GCSE Photography OCR - Contact: Mr Romain - jromain@saltashcloud.net

A GCSE Photography course is a practical, creative, two-year program focusing on digital and traditional techniques, assessed through a 60% portfolio (Coursework) and a 40% practical exam (Externally Set Assignment), covering skills like composition, editing (Photoshop), digital manipulation and exploring artists, perfect for developing personal expression and skills for creative careers. Students build skills in genres like portraiture, landscape, and still life, using DSLRs and smartphones, and are expected to work independently outside lessons to build their portfolio

Creative

Education

Business

Digital & Media

Hospitality

Component Marks Duration Weighting:

Portfolio (01): 120 marks, 1 Year, 60%, Non-exam assessment

Externally set task (02): 80 marks, 10 hours, 40%

Component 01: Portfolio	Component 02: Externally set task
Students produce a portfolio of practical work showing their personal response to a set starting point, brief, scenario or stimulus. The portfolio may be presented in appropriate formats for the specification title they are following and chosen area of study, including sketchbooks, digital presentations, mounted sheets, maquettes, prototypes, animated work, or illustrated written work.	Students respond to one of five themes, each with a range of written and visual starting points and stimuli. Students research, plan and develop ideas for their response to the option they have chosen, which they must then realise within the ten-hour supervised time period.

Key Skills & Techniques

- Digital Photography: Camera settings, lighting, composition, digital editing (Adobe Photoshop).
- Research: Studying photographers, artists, and designers to inform personal projects.
- Genres: Exploring portrait, landscape, still life, documentary, studio, and experimental photography.

What You'll Need/Do

- Equipment: A digital camera (DSLR recommended, but smartphones accepted) and access to photo editing software.
- Homework: Significant independent work, including photoshoots and developing ideas outside of class.
- Qualities: Creativity, organisation, independence, and problem-solving skills.

Why Take GCSE Photography?

- Creative Outlet: A practical way to express yourself.
- Career Path: Strong foundation for A-Levels in Art & Design, Photography, and careers in creative industries (graphic design, fashion, media).
- Transferable Skills: Develops digital literacy, project management, and critical thinking.

Future jobs with Photography GCSE

Direct Photography Roles: Professional Photographer, Photojournalism/Editorial, Studio Photographer, Photo Editor/Retoucher or Photographic Technician.

Creative & Media Roles: TV & Film, Digital Media, Graphic Designer, Web Designer, Interior Designer, Photographic Stylist, Hair/Makeup Artist or Animation/Games Designer.

Related & Support Roles: Art & Photography Technician, Art Editor or Print Operator/AV Technician.

Optional Subjects

Psychology (GCSE)

Healthcare

GCSE Psychology AQA - Contact: Miss May - smay@saltashcloud.net

Medical

Are you curious about what makes people tick? Do you want to understand why we behave the way we do, how our minds work, and what shapes our thoughts, emotions, and actions? If so, GCSE Psychology is the perfect choice for you!

Education

In this exciting course, you'll explore key questions like:

STEM

- What causes phobias, and how can they be treated?
- How do our memories work, and why do we forget?
- Why do some people conform or obey, even in extreme situations?
- What role does nature vs. nurture play in shaping who we are?

Law

Sports

You will study fascinating topics such as memory, perception, social influence, development, and mental health. Along the way, you'll develop critical skills in analysing evidence, conducting experiments, and evaluating psychological

theories. Psychology blends science, social studies, and ethics, making it an excellent choice for anyone interested in people.

Psychology is a thought-provoking and rewarding subject, but it requires commitment and effort. Be prepared to work hard, apply yourself, and engage with complex ideas. By doing so, you will develop a deeper understanding of human behaviour and valuable transferable skills, including critical thinking, research, and essay writing.

Mathematical Skills:

The course includes a 10% mathematical component. Students will apply mathematical skills to psychological data, including:

- Percentages
- Averages (mean, median, mode)
- Interpreting graphs and tables
- Basic data analysis

These skills are integrated throughout the course and supported in lessons.

Paper 1: Cognition and Behaviour	Paper 2: Social context and behaviour
<ul style="list-style-type: none">• Memory• Perception• Development• Research methods	<ul style="list-style-type: none">• Social influence• Language, thought and communication• Brain and neuropsychology• Psychological problems
Written exam: 1 hour 45 minutes, 100 marks, 50% of GCSE	Written exam: 1 hour 45 minutes, 100 marks, 50% of GCSE

Further Education and Careers

This subject can lead to exciting career pathways in fields such as health care, education, criminal justice, and business. Whether you dream of becoming a psychologist, working in mental health, or simply want to understand the human mind, this course will prepare you for success.

Get ready to discover the science of the mind and the art of understanding human behaviour!

Optional Subjects

Religious Studies (GCSE)

GCSE Religious Studies (Eduqas) - Contact: Mr Pomfret - jpomfret@saltashcloud.net

Medical

Education

Law

Hospitality

The rest of the world is getting closer all the time, through travel, TV, films and our phones. We can connect with people close by and all over the world easily. For example, you may already have been on a foreign holiday, or thought about travelling after you leave school. Maybe living and working abroad appeals to you. How will you deal with all those different approaches to life? How will you know what "the right thing to do" is when you find yourself somewhere new?

Wherever you go, the ability to understand not just that people are different, but why they are different is an essential life skill. Religious Studies gives you the opportunity to do just this; we explore a range of different Christian, Buddhist and non-religious worldviews, representing about half the world's population!

This GCSE is for anyone who likes to ask big questions, who wants to make their voice heard and is interested in how people's beliefs affect their actions. It suits those who like to talk things through, debate, analyse, evaluate and solve problems. So, it's not just life skills you develop in RS, there are also academic skills that transfer seamlessly into the world of work.

Big topics, important issues, trips and visiting speakers; it's about getting ready for the real world and getting a GCSE at the same time. What's not to like?! Don't just take our word for it, ask your RE teacher for a leaflet and read what past students have said...

Assessment	Detail	% of final mark
Paper 1 - exam	<ul style="list-style-type: none"> Religious, Philosophical and Ethical Studies in the Modern World Issues of Relationships: family life; marriage and separation; attitudes to contraception; gender prejudice and discrimination Issues of Life and Death: the environment; the origin and value of human life; beliefs about death and the afterlife Issues of Human Rights: Social justice; prejudice and discrimination; issues of wealth and poverty Issues of Good and Evil: crime and punishment; forgiveness; good, evil and suffering 	50%
Paper 2 - exam	Christianity – beliefs and practices	25%
Paper 3 - exam	Buddhism – beliefs and practices	25%

RS is useful in any job or career where you will meet and work with people, which is most of them! Here are some prime examples:

- military
- policing
- sport
- education
- medical
- hospitality
- social care
- entertainment
- engineering
- construction
- journalism
- politics
- law

Use the QR code to see the RS Padlet wall, where classes find all the information they need. The password is wearde.



Optional Subjects*

Separate Science (Biology, Chemistry & Physics GCSE)

Healthcare

Medical

Education

STEM

Sports

GCSE Triple Science AQA - Contact: Mr Henderson - chenderson@saltashcloud.net

- This course involves the study of complex scientific concepts so is best suited to students that not only have a love of science but also a good understanding of the key concepts from key stage three. Students choosing this option must pick the separate science option as one of their **four option choices**.
- This course will stretch and challenge even the most able and is aimed at pupils who have a passion and an interest in the sciences. It provides pupils with a nationally recognised, high quality qualification in the 3 separate GCSE subjects of Chemistry, Biology and Physics.

What does the course involve?

Studying GCSE Biology, Chemistry and Physics as separate sciences provides you with the opportunity to further develop your understanding of scientific explanations and how science works. You'll be able to study elements of applied Biology, Chemistry and Physics with particular links to the work of professional scientists. These separate sciences cover the content of GCSE Combined Science with further material from each of the disciplines.

How will I be assessed?

The course for each of the separate sciences is comprised of 2 external exams each counting for 50% of the final grade. There are no Controlled Assessments or coursework, instead students will complete a series of experiments throughout the year, and these will be assessed in the final exam. Each subject has the same assessment format and all exams are taken at the end of Year 11.

Module	Content	Exam Length	% Weighting
Biology 1	Cells, Organisation, Infection and Bioenergetics	1hour 45 minutes	50%
Biology 2	Homeostasis, Inheritance, Variation and Ecology	1hour 45 minutes	50%
Chemistry 1	Atomic Structure and the Periodic table, Structure and Bonding, Quantitative chemistry, Chemical change and Energy changes	1hour 45 minutes	50%
Chemistry 2	Rate of chemical change, Organic chemistry, Chemical analysis, Chemistry in the atmosphere and Using resources	1hour 45 minutes	50%
Physics 1	Energy, Electricity, Particle model and Atomic structure	1hour 45 minutes	50%
Physics 2	Forces, Waves, Magnetism and Space	1hour 45 minutes	50%

What could I do next?

- Following this course provides an excellent foundation for studying sciences post 16, in particular A level Biology, Chemistry or Physics and Psychology. This provides a route for pupils considering a career in science e.g. as a doctor, vet, dentist, physiotherapist, teacher or engineer.
- Pupils must be willing to carry out practical work. Pupils must also be willing to attend regular booster sessions in order to prepare them for their exams.

Optional Subjects

Sociology (GCSE)

GCSE Sociology - Contact: Miss Coles - rcoles@saltashcloud.net

Ever looked at the world around us and wonder why some people do better than others. Asked yourself question like "why do girls outperform boys in education?", "why do criminals commit crime?", "how has the family changed over time and why?", "how can there still be poverty in the 21st century?" ...then sociology is for you.

Sociology is the study of contemporary society and the social patterns of behaviour. As a sociologist you will be analysing aspects of society, we may be familiar with, in new, evidence-based ways. Sociology is an academic subject and requires a young sociologist to adopt a new view to looking at the world. It requires open-mindedness and the ability to be able to recognise, understand and acknowledge other viewpoints in a tolerant and respectful manner.

This isn't a subject for the faint hearted, we will be studying the classic and latest academic research and statistics for each of the areas we study, you will develop the ability to interpret, analyse and evaluate society and social behaviour and to build complex and coherent arguments in written form, because of this you must be comfortable with writing.

Healthcare

Medical

Creative

Education

Business

Law

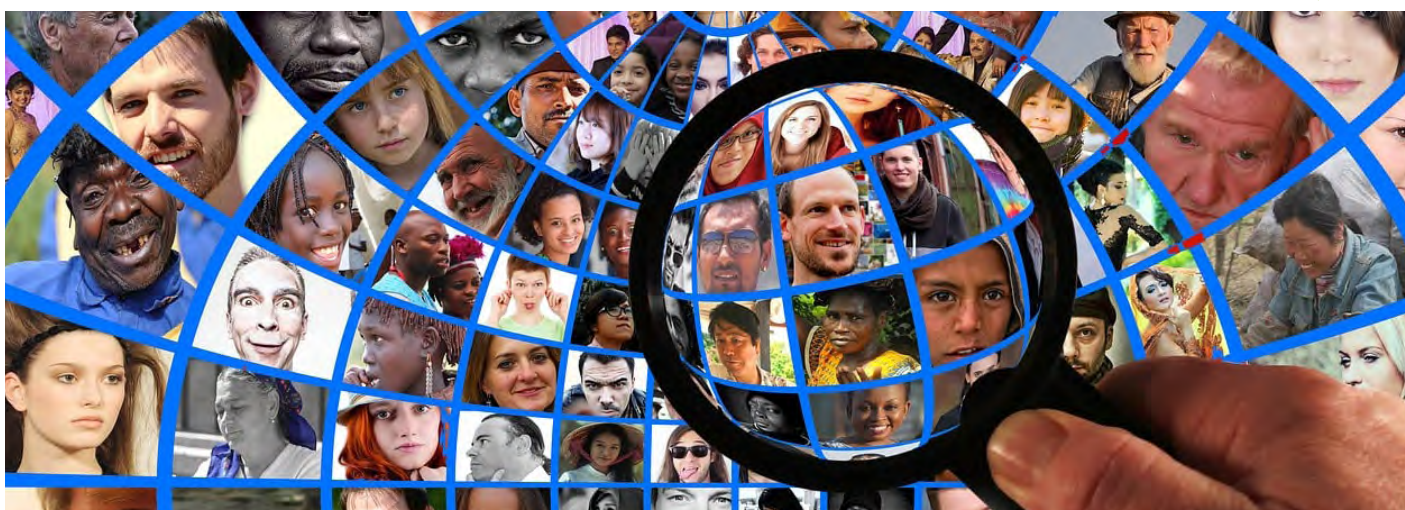
Hospitality

Assessment information: (AQA Exam Board)

Paper 1 – Exam	Paper 2 - Exam
50%	50%
<ul style="list-style-type: none">The sociology of familiesThe sociology of educationRelevant areas of social theory and methodology	<ul style="list-style-type: none">The sociology of crime and devianceThe sociology of social stratificationRelevant areas of social theory and methodology

Sociology can lead to many areas of employment, especially careers that involve interactions with members of wider society, such as:

- Law and the Police
- Market Research
- Politics
- Education
- Medicine
- Media
- Social work



Optional Subjects

Sports Studies (CamNat)

Healthcare

Medical

Education

Sports

Cambridge Nationals Sport Studies Level 2 Certificate - J813 -

Contact: Mrs Bunney – kbunney@saltashcloud.net

Why choose to study Sport Studies?

- If you enjoy PE, play sport and are interested in it.
- If you enjoy physical activity and taking part in outdoor adventurous activities.
- If you like the sound of a variety of physical and academic challenges all as part of one course.
- If you want to do a course that has a great balance of coursework and exams.
- If you also intend to do Sports Leadership level 1 as there is a focus towards

developing your employability skills with strong elements that develop leadership, communication skills and coaching.

Module	Content	Assessment	%
Unit 1 R184	Contemporary Issues in Sport Learners develop an insight into how sport operates in the UK and the wider aspects of the sports industry.	1 hour 15 min written exam	40%
Unit 2 R185	Performance and Leadership in sports activities Learners will be assessed as performer in 2 sporting activities. Learners will be assessed as a coach by applying practice methods to support improvement in a sporting activity. Learners will learn about all the roles and responsibilities of a sports leader. Learners will plan and deliver a sports activity session and then evaluate it.	Practical and written coursework	40%
Unit 3 R187	Increasing awareness of Outdoor and Adventurous activities Learners will know about the range of outdoor activities across the country. Learners will understand how to plan and prepare for an outdoor activity. Learners will develop their communication, decision making and leadership skills by taking part in outdoor activities in challenging scenarios and environments.	Practical and written coursework	20%

Where might it take me?

After this course you can progress to the Level 3 Sport Studies courses we offer in sixth form. If you would like a career in any aspect of the sport and leisure industry then this is the first step.

Compulsory Subjects

English Language

Healthcare

Medical

Creative

Education

Business

STEM

Law

Digital & Media

Sports

Hospitality

GCSE English Language AQA 8700 -

Contact: Mrs Watson - gwatson@saltashcloud.net



Module	Content	Assessment	% of final mark
Paper 1	<p>Explorations in Creative Reading and Writing</p> <p>Section A: Students will read and answer questions about one fiction text.</p> <p>Section B: Students will produce a piece of descriptive or narrative writing.</p>	Examination	50%
Paper 2	<p>Writers' Viewpoints and Perspectives</p> <p>Section A: Students will read and answer questions on two non-fiction texts.</p> <p>Section B: Students will produce a piece of writing that presents a viewpoint or argument.</p>	Examination	50%
Spoken Language	Presenting information and ideas and responding to questions.	Oral Assessment	0% (separate endorsement)

Compulsory Subjects

English Literature

GCSE English Literature AQA 8702 -

Contact: Mrs Watson - gwatson@saltashcloud.net



Module	Content	Assessment	% of final mark
Paper 1	<p>Shakespeare and the 19th - century novel</p> <p>Section A: Students will answer one question on 'Macbeth.'</p> <p>Section B: Students will answer one question about 'A Christmas Carol.'</p>	Examination	40%
Paper 2	<p>Modern texts and poetry</p> <p>Section A: Students will answer one question about a studied modern text.</p> <p>Section B: Students will answer one question about two poems that they have studied from their anthology.</p> <p>Section C: Students will answer two questions about two unseen poems.</p>	Examination	60%

Compulsory Subjects

Mathematics

Healthcare

GCSE Mathematics Edexcel 1MA1 -
Contact: Mr Farnham - cfarnham@saltashcloud.net

Medical

Maths is one of the best subjects to develop your analytical, research and problem-solving skills. Not only will studying maths help give you the knowledge to tackle scientific, mechanical, coding and abstract problems, it will also help you develop logic to tackle everyday issues like planning projects, managing budgets and even debating effectively.

Creative

Education

Business

Maths uses its own language, made up of numbers, symbols and formulas, to explore the rules we need to measure or identify essential problems like distance, speed, time, space, change, force and quantities.

STEM

Law

Studying maths helps us find patterns and structure in our lives. Practically, maths helps us put a price on things, create graphics, build websites, build skyscrapers and generally understand how things work or predict how they might change over time and under different conditions.

Digital & Media

Sports

Hospitality

Module	Assessment	% of final mark
Paper 1 = 80 marks	Non-Calculator	33.3% of Final Mark
Paper 2 = 80 marks	Calculator	33.3% of Final Mark
Paper 3 = 80 marks	Calculator	33.3% of Final Mark

The three papers are of equal weighting each being 80 marks, giving a total of 240 marks. Please note that all students will require a scientific calculator.



Compulsory Subjects

Combined Science

GCSE Combined Science (2 GCSEs) AQA 8464 -

Contact: Mr Henderson - chenderson@saltashcloud.net

This course focuses on the knowledge and understanding that you need to make sense of the science you will meet in everyday life. During the course, you'll study many of the major theories of science in a way that enables you to appreciate their importance to everyday life. The course also explores how scientific information is obtained, how reliable it is, what its limitations are, and how this information helps society to make important decisions. We believe that science has something to offer every student. From a trainee chef to a nuclear physicist, a construction apprentice to a cancer researcher, everyone needs some level of relevant scientific understanding.

Students study areas of science including the immune system, the effects of drugs and alcohol, atomic structure, the greenhouse effect, electricity, nuclear physics and forces. A portion of the course focuses on the practical application of scientific skills.

Healthcare

Medical

Creative

Education

Business

STEM

Law

Digital & Media

Sports

Hospitality

Module	Content	Exam Length	% Weighting
Biology 1	Cells, Organisation, Infection and Bioenergetics	1 hour 15 minutes	16.7%
Biology 2	Homeostasis, Inheritance, Variation and Ecology	1 hour 15 minutes	16.7%
Chemistry 1	Atomic Structure and the Periodic table, Structure and Bonding, Quantitative chemistry, Chemical change and Energy changes	1 hour 15 minutes	16.7%
Chemistry 2	Rate of chemical change, Organic chemistry, Chemical analysis, Chemistry of the atmosphere and Using resources	1 hour 15 minutes	16.7%
Physics 1	Energy, Electricity, Particle model and Atomic structure	1 hour 15 minutes	16.7%
Physics 2	Forces, Waves and Magnetism	1 hour 15 minutes	16.7%

- Exams are available in Higher and Foundation tiers. There is no coursework or Controlled Assessment, instead students will undertake a series of practicals over two years and students will be asked exam questions on these practicals as part of their final exams.
- Pupils will carry out practical work in order to support their learning. Booster sessions will also be offered to pupils to prepare them for their exams.

What could I do next?

A-Level Science and as a route for pupils considering a career in science e.g. as a doctor, vet, dentist, physiotherapist, teacher or engineer

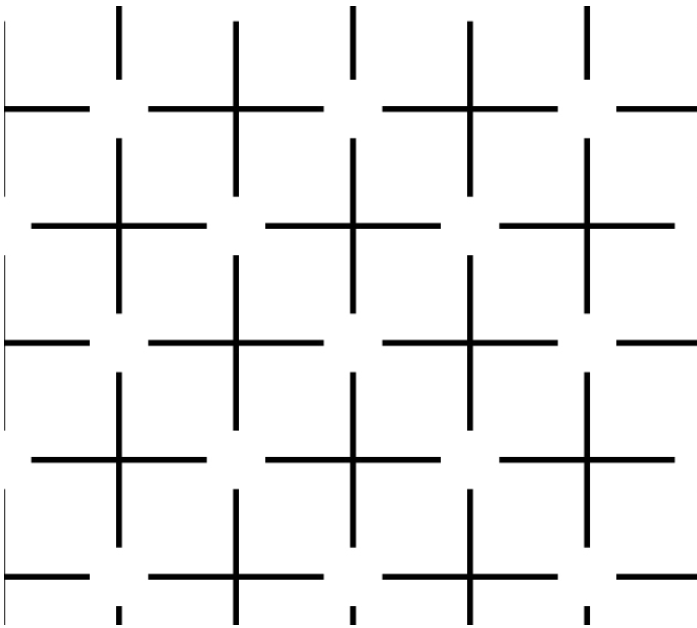
Compulsory Subjects

Religion & Ethics

(Non-Exam) Religion and Ethics - Contact: Mr Pomfret - jpomfret@saltashcloud.net

All pupils follow the school's non-examined Religion and Ethics course (Core RE). To quote the Religious Education Council, "The ability to understand the faith or belief of individuals and communities, and how these may shape their culture and behaviour, is an invaluable asset for children in modern-day Britain. Explaining religious and non-religious world views in an academic way allows young people to engage with the complexities of belief, avoid stereotyping and contribute to an informed debate."

In Year 10, pupils explore "A Good Life" and in Year 11 they consider "The Right Life?" This philosophy-based programme allows pupils to deepen their understanding of our diverse society and develop their inter-personal skills. Topics include ethical theories, inequality and representation, the problem of evil and the existence of God. As with GCSE Religious Studies, the course gives pupils the chance to explore religious and non-religious approaches to contemporary moral issues. Most importantly, it also allows them to voice their own views in a safe space.



Compulsory Subjects

Personal Development

(Non-Exam) PSHE - Contact: Mrs Gue - egue@saltashcloud.net

The study of Personal, Social, Health and Economic education aims to give students the knowledge, skills and understanding to play an effective role in society, and to help them become informed and responsible citizens, aware of their duties and rights. Students will learn about our economic, political and legal systems and will be encouraged to respect different national, religious and ethnic identities. Students will learn how to research, obtain and use different types of information, including the media and ICT, and how to evaluate their effectiveness and bias. They will also be encouraged to play an active role in the life of the school, the local community and the wider world.

PD lessons also cover:

- Careers Education Information and Guidance
- Work Experience, including preparation, feedback from employers and debriefing/reflection
- Relationships and Sex Education
- Health and Well Being
- Drugs and Alcohol Education
- Financial education
- Digital Literacy



Compulsory Subjects

Games

(Non-Exam) Physical Education - Contact: Mr Hawkins - rhawkins@saltashcloud.net

At the end of Year 9 students will opt for one of two pathways for their core PE programme. They will select the **Sports leadership** qualification pathway or the **Sporting habit for life** pathway. Whichever direction they choose, they will have a fantastic and rewarding physical activity experience that will provide them with a range of skills to win at life!

Level 1 in Sports Leadership: This is a stand-alone certified course that gives students the opportunity to obtain a qualification in Physical Education. This award will work on the leadership skills of the student and teach them the basics of how to deliver safe, fun activity-sessions to younger students. It will also encourage them to become more enthusiastic and confident about sport. This is a recognised award developed by Sports Leaders UK, in which candidates will receive certificates and pin badges upon successful completion. There is no examination, but students are assessed throughout the course and it is externally moderated.

Fit for Life: All year 10 students will take part in 'Fit for Life' Lessons. These lessons are all about getting back to the basics of fitness and rediscovering what our bodies are physically capable of. Using our purpose-built gym, with a full range of fitness equipment, students will learn about the health-related components of fitness that will help them understand how to manage their own health and fitness development. It will deepen understanding of how to be 'fit for life' and therefore have a lasting impact on students' long term behaviours and wellbeing.

Habit for Life: During the spring term, students will follow a carousel of activities and games across all of our indoor and outdoor facilities. These activities are about fun, engagement and inspiring a love of physical activity with PE being a highlight in their school week. All teachers will model this and select some of the themes we use in KS3 to add purpose to the lessons, whether this is from components of fitness, or employability skills.





Saltash Community School

Wearde Road,

Saltash,

Cornwall

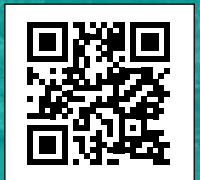
PL12 4AY

Tel: 01752 843715

Email: head@saltashcloud.net

enquiries@saltashcloud.net

Website: <https://www.saltash.net/>



A company limited by guarantee, registered in England and Wales, No: 7542166. South East Cornwall Multi Academy Regional Trust, an exempt charity.

